

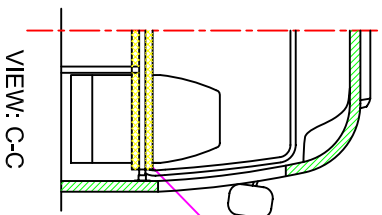
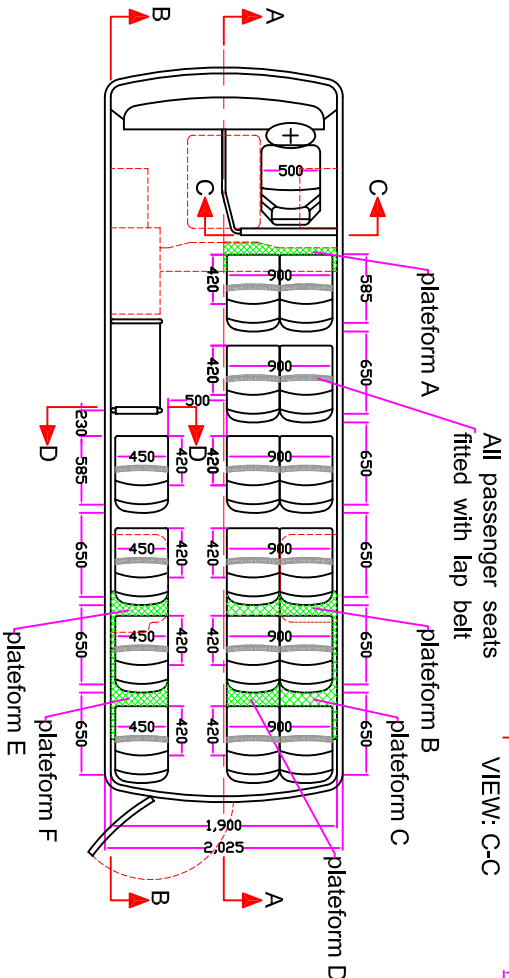
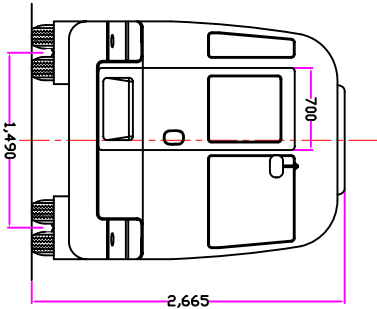
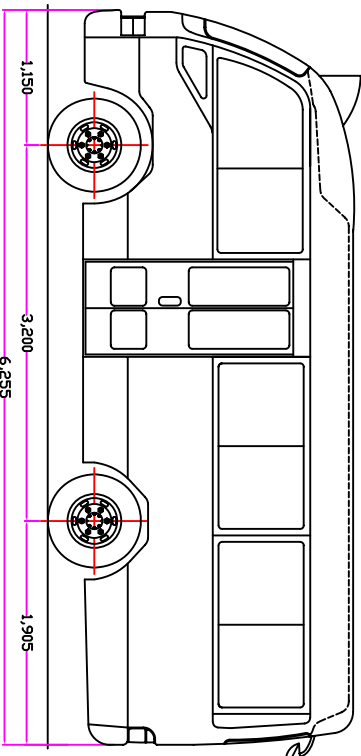
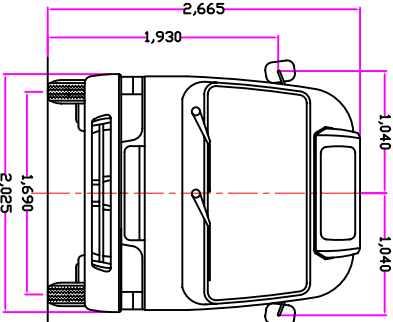
Model: Toyota Coaster BB42R-ZCMSS

Approved Design, Reinforcement Parts and Installation Details

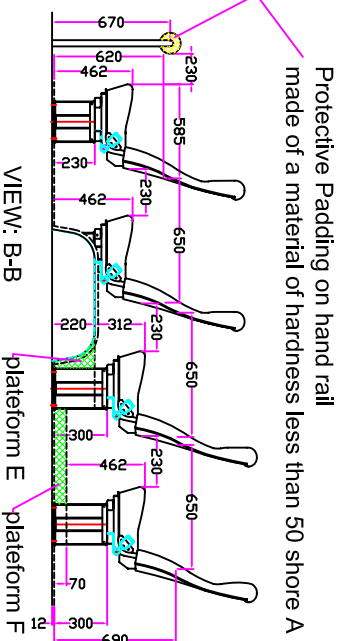
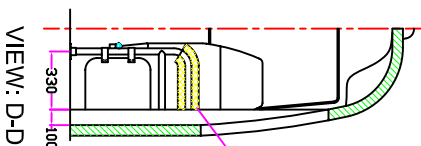
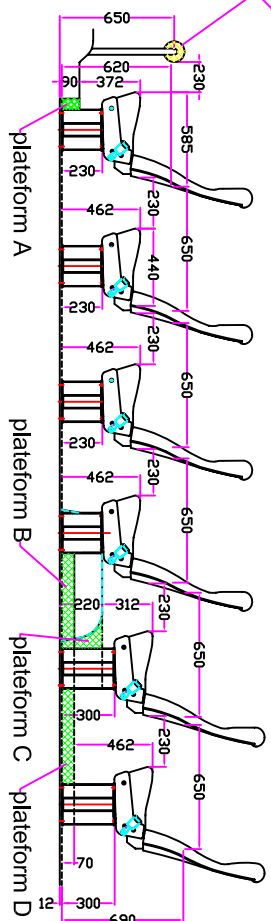
Content

1. Approved Seat Plan
2. Reinforcement Details
3. Reinforced Structure Assembly Drawing
4. Vogel seat leg modifications
5. List of Reinforcement Parts

Seat plan for
Public light bus
Vehicle model:
Toyota Coaster
BB42R-ZCMSS
installed with
16 passenger seats
Seat model:
Vogelsize Top 2020
with integral retractable
lap belt



Protective Padding to be fitted on the driver's guard rail
with tubular foam of 30mm internal diameter and 50mm in thickness
Wrapped by fire retarded vinyl cover

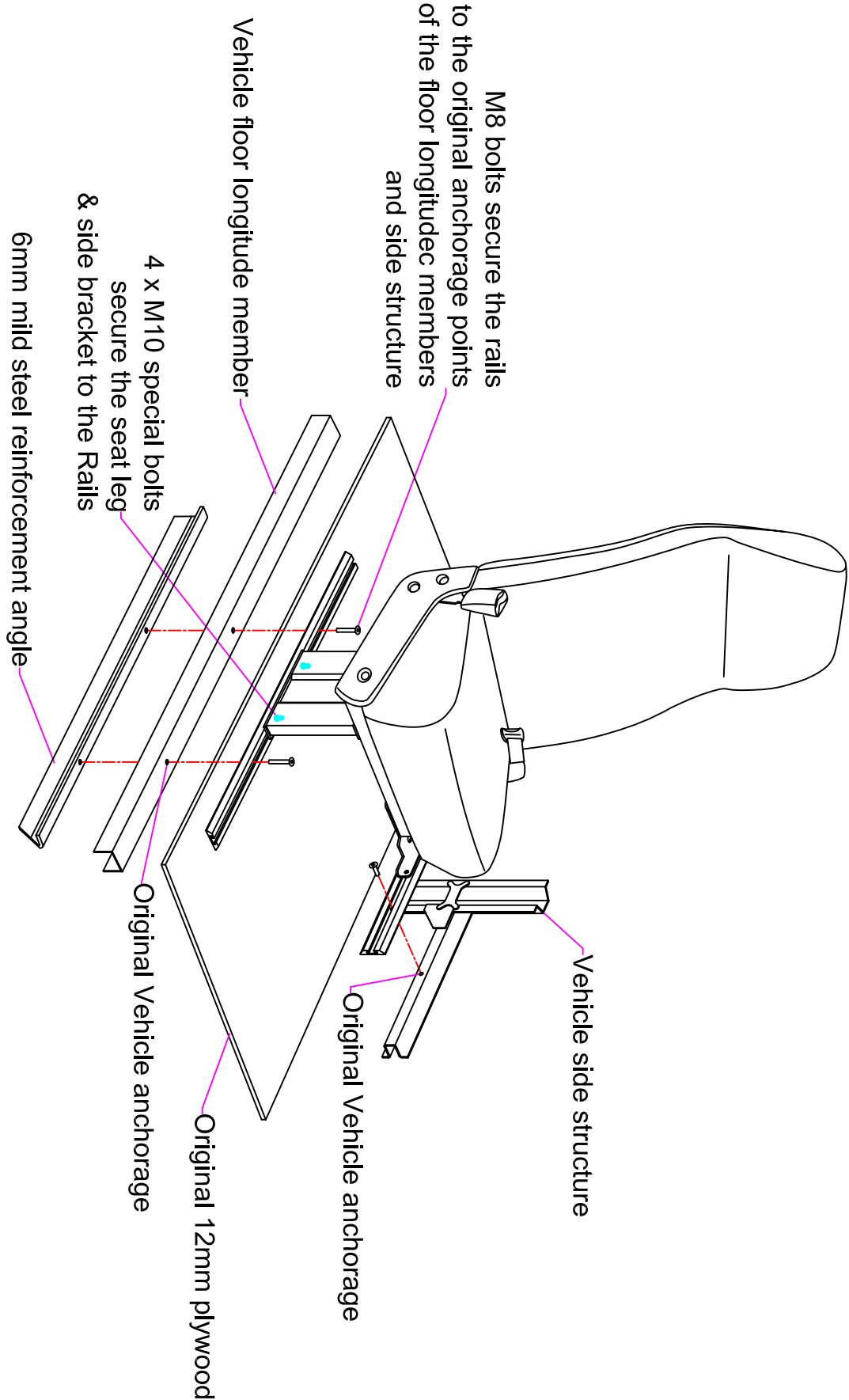


SCSYS

Seat plan for Vogelsize Top 2020 Seat on BB42R

Approved		Date	2006.05.28
Checked		Dwg No	LB-42-T2
Drawn			

Floor / Side Reinforcement for Vogelsize Top 2020



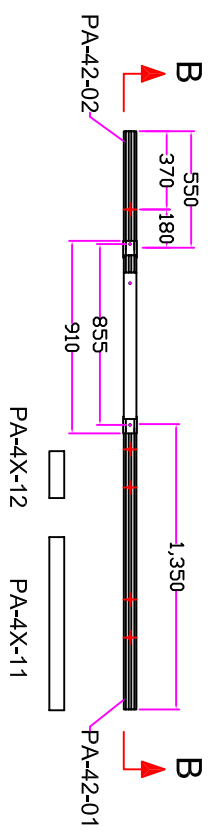
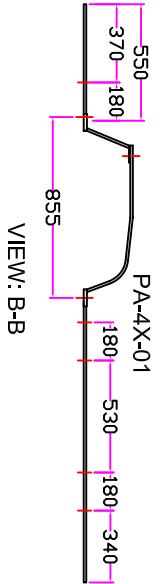
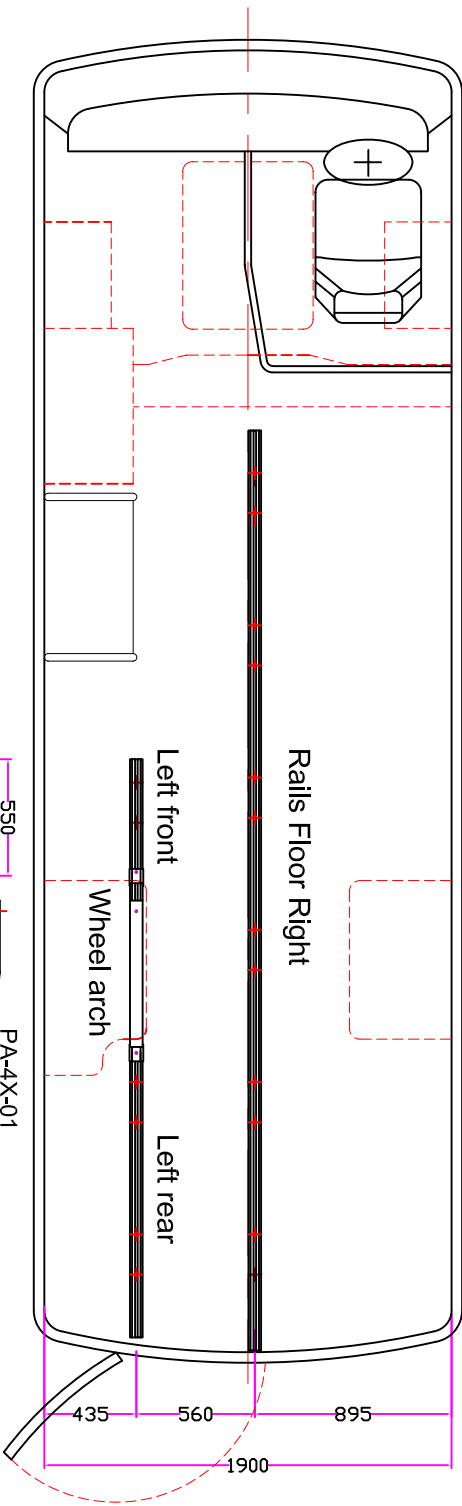
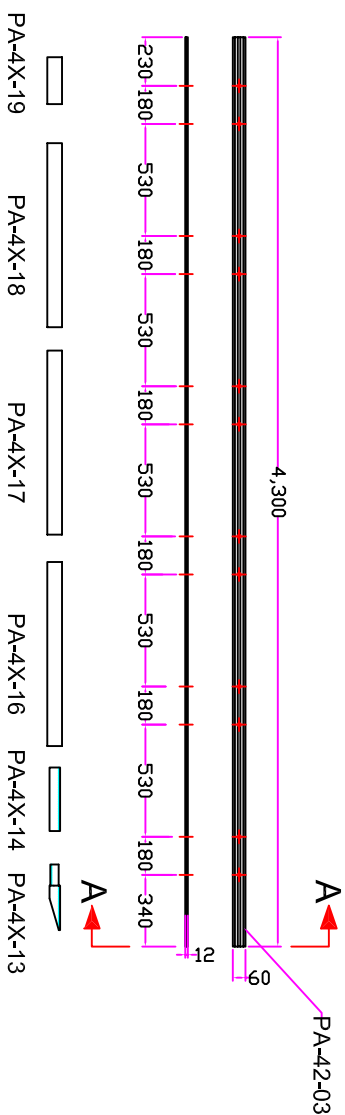
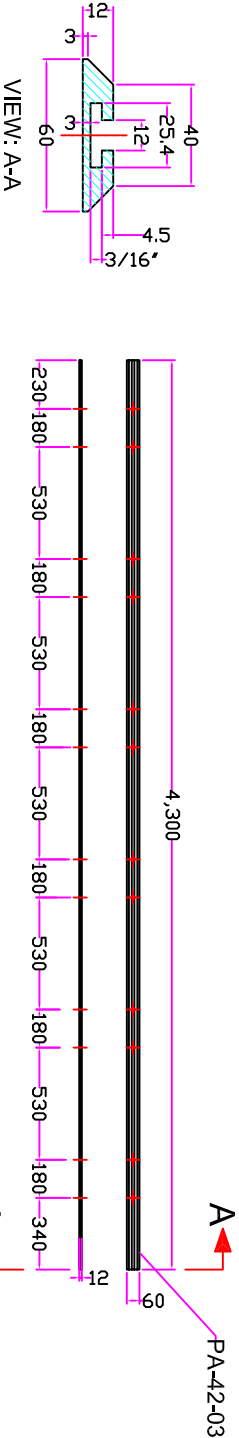
SCSYS

Scale

Date 2006.05.25

Dwg No LB-4X-T12

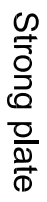
Toyota Coaster short wheel base PLB BB42R-ZCMSS Reinforced Rails on Floor



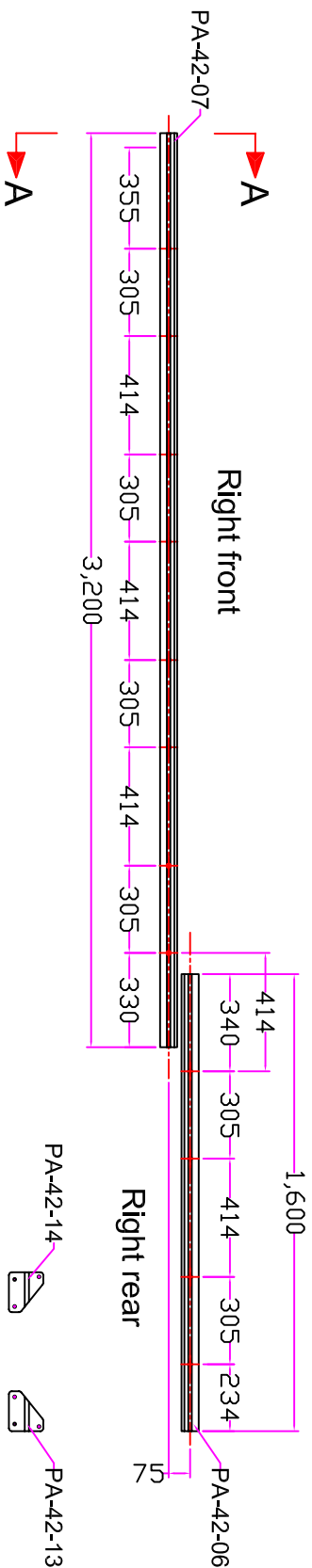
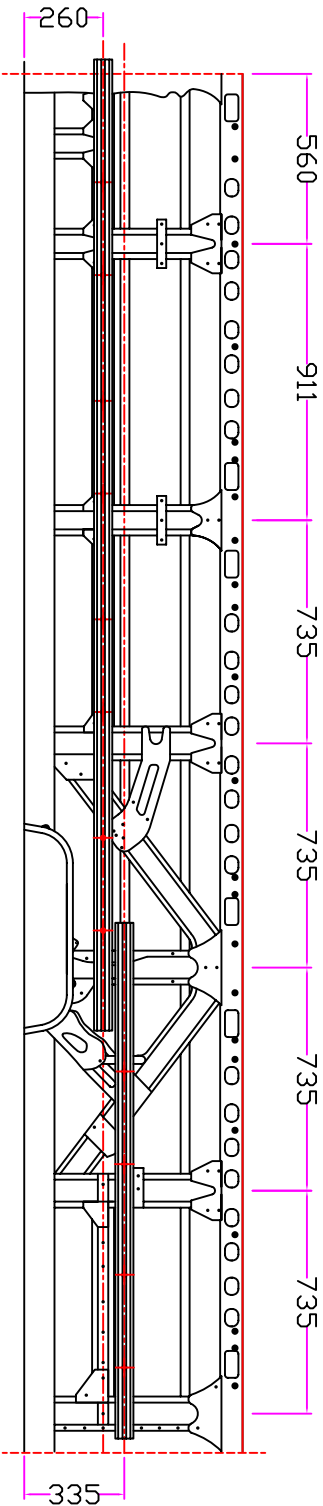
SCSYS

Scale

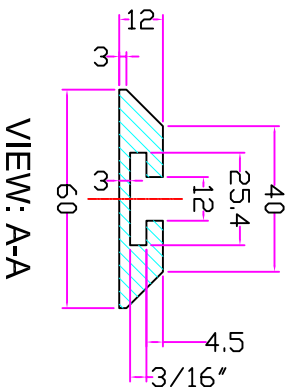
Date 2006.05.28
 Dwg No LB-42-21



Toyota Coaster short wheel base PLB
BB42R-ZCMSS Right side structure reinforced



Strong plate



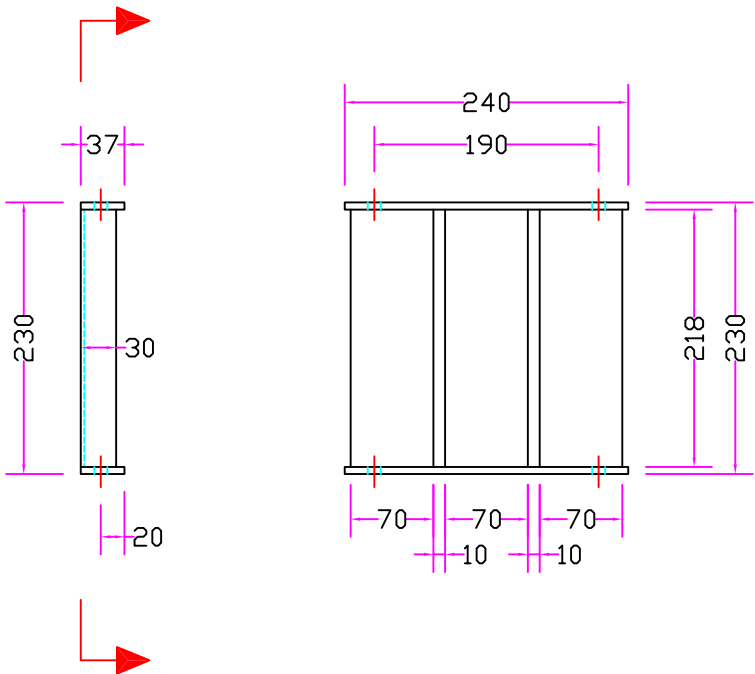
SCSYS

Scale

Date 2006.05.28

Dwg No LB-42-23

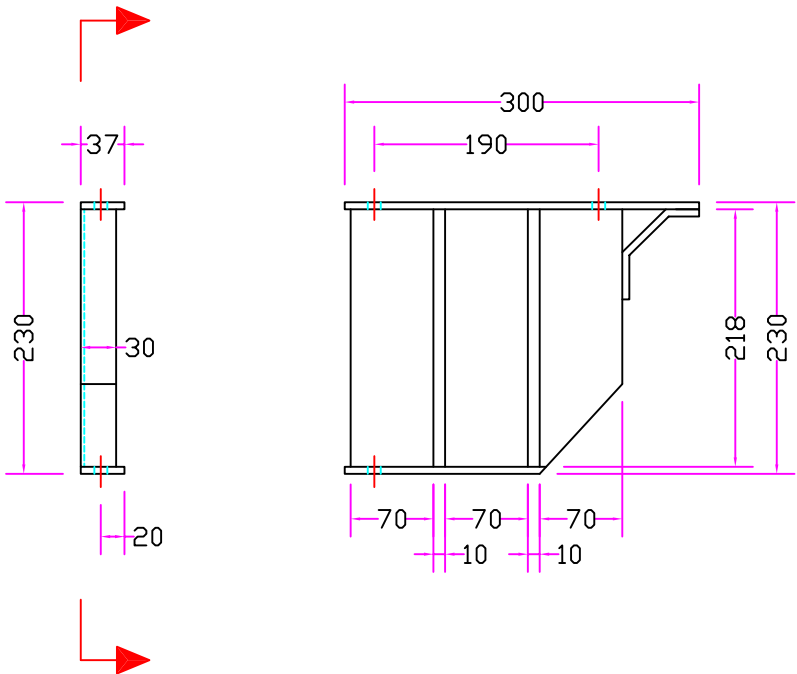
Vogel seat leg standard



scsys

Date	2006.05.25
Dwg No	LB-4X-T2-11

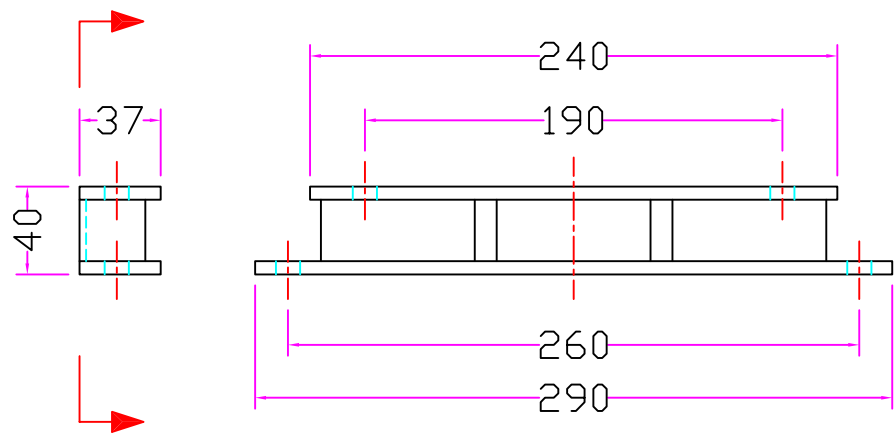
Vogel seat leg
Row 4 left



scsys

Date	2006.05.25
Dwg No	LB-4X-T2-12

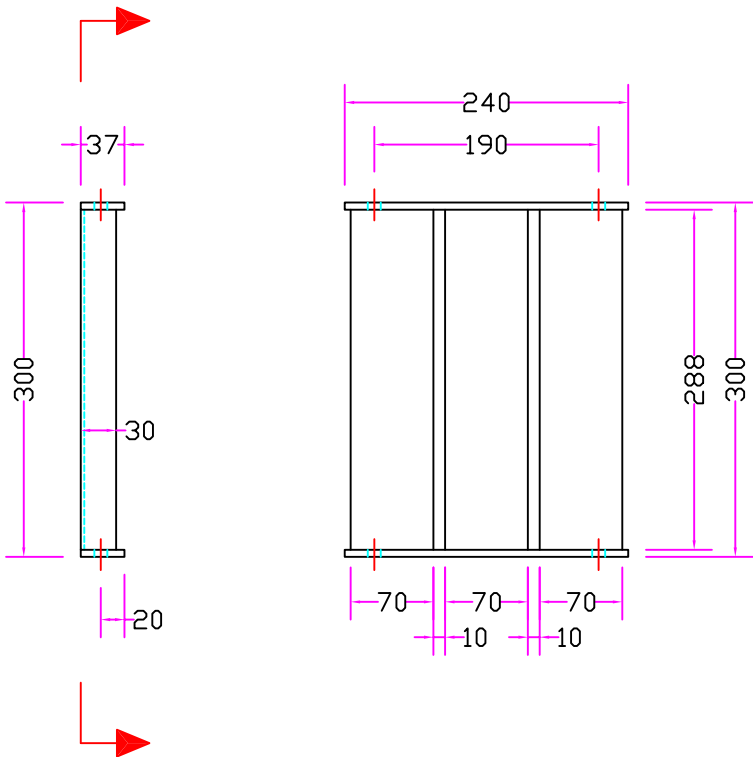
Vogel seat leg
Row 5 left



scsys

Date	2006.05.30
Dwg No	LB-4X-T2-13

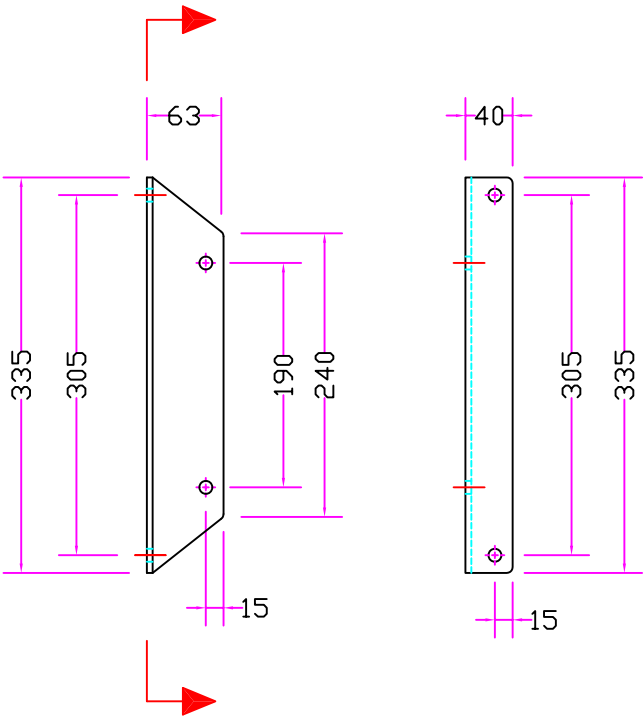
Vogel seat leg
Row 6 & 7 left



scsys

Date	2006.05.25
Dwg No	LB-4X-T2-14

Vogel seat side weel Bracket



scsys

Date	2006.05.25
Dwg No	LB-4X-T2-15

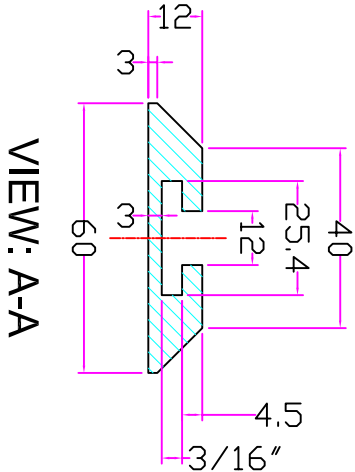
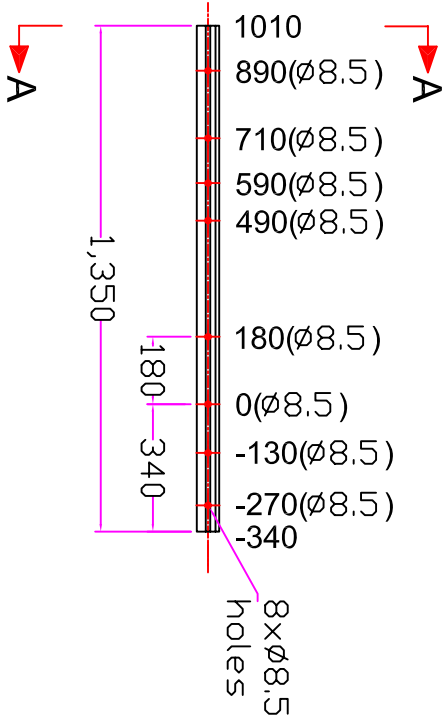
Part List for reinforcement

Table LT- 42-part list

Parts required for High Back Seat Installations
(Seat and Seat leg are not included)

items	Part Descriptions	Qty per Vehicle	Drawing No
1	Railing, floor,left,rear	1	PA-42-01
2	Railing, floor,left,front	1	PA-42-02
3	Railing, floor,right	1	PA-42-03
4	Railing, side, left, rear	1	PA-42-04
5	Railing, side, left, front	1	PA-42-05
6	Railing, side, right, rear	1	PA-42-06
7	Railing, side, right, front	1	PA-42-07
8	Strong plate left front, Side rail	1	PA-42-11
9	Strong plate right front, Side rail	1	PA-42-12
10	Strong plate right rear, Side rail	1	PA-42-13
11	Strong plate left rear, Side rail	1	PA-42-14
12	Wheel Arch, left	1	PA-4x-01
13	Reinforcement angle, under floor, left 1	1	PA-4x-11
14	Reinforcement angle, under floor, left 2	1	PA-4x-12
15	Reinforcement channel, under floor, right 1	1	PA-4x-13
16	Reinforcement channel, under floor, right 2	1	PA-4x-14
17	Reinforcement angle, under floor, fuel tank	1	PA-4x-15
18	Reinforcement angle, under floor, right 3	1	PA-4x-16
19	Reinforcement angle, under floor, right 4	1	PA-4x-17
20	Reinforcement angle, under floor, right 5	1	PA-4x-18
21	Reinforcement angle, under floor, right 6	1	PA-4x-19
22	Bolt & Nut, Seat Anchorage	40	PB-01
23	Bolt, Structure, M8	20	
24	Bolt, Anti slid, M6	20	
25	Cushions, hand rail, driver cab	1	
26	Cushions, hand rail, staircase	1	
27	Floor platform A, row 2	1	
28	Floor platform B, row 6, right	1	
29	Floor platform C, row 6, right	1	
30	Floor platform D, row 7, right	1	
31	Floor platform E, row 6, left	1	
32	Floor platform F, row 7, left	1	

BB42R



SCSYS

Scale

Rail floor left rear

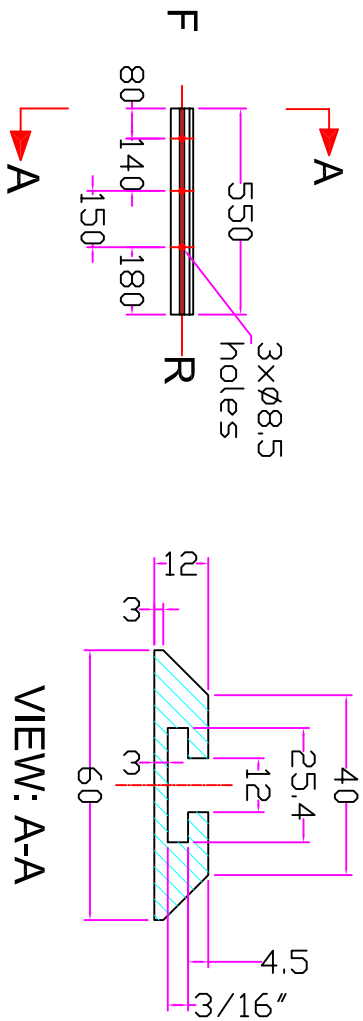
Date

Dwg No

2006.05.28

PA-42-01

BB42R



SCSYS

Scale

Rail floor left front

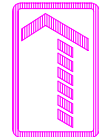
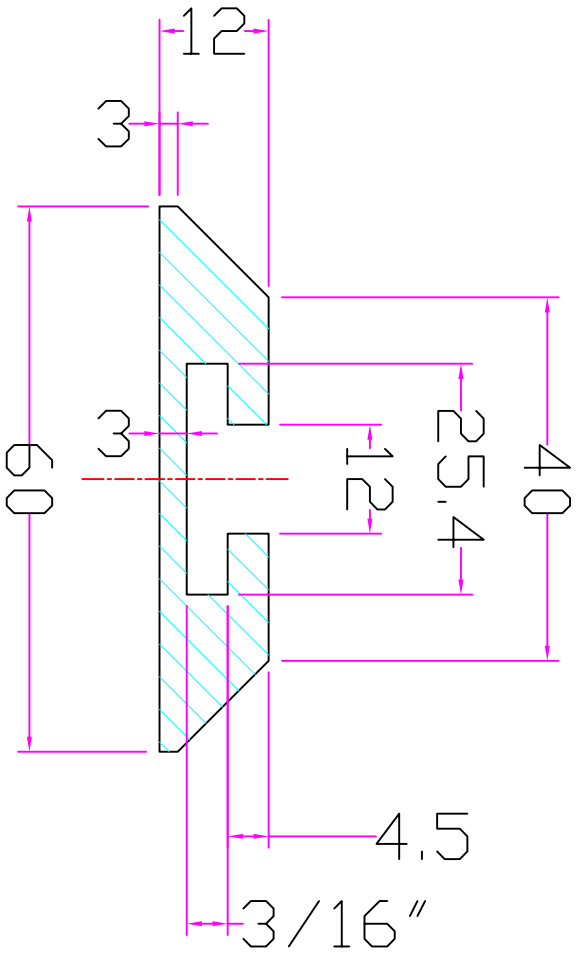
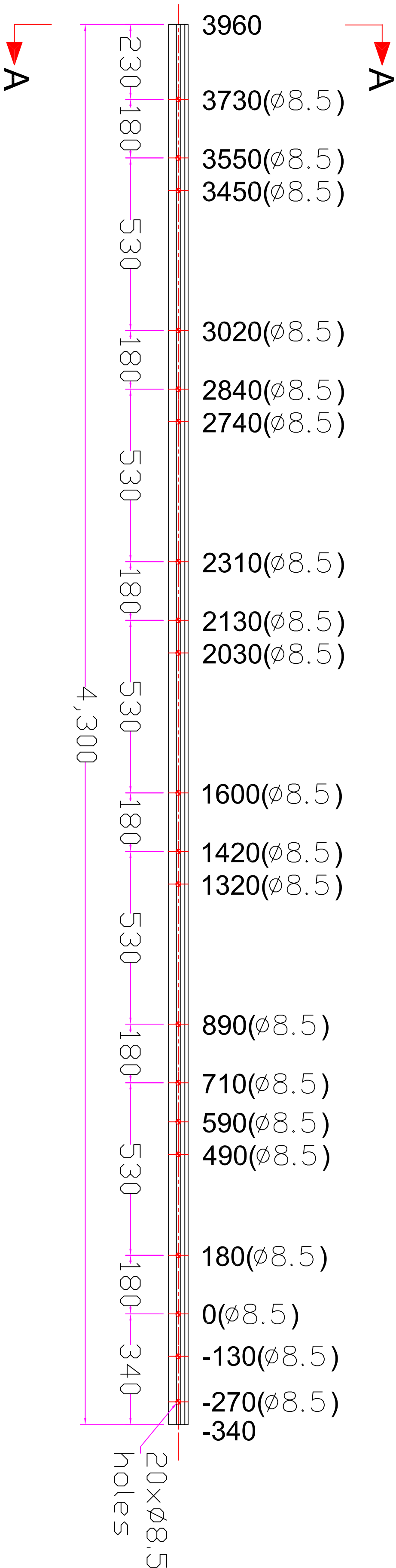
Date

Dwg No

2006.05.28

PA-42-02

BB42R



SCSYS

Scale

Rail floor right

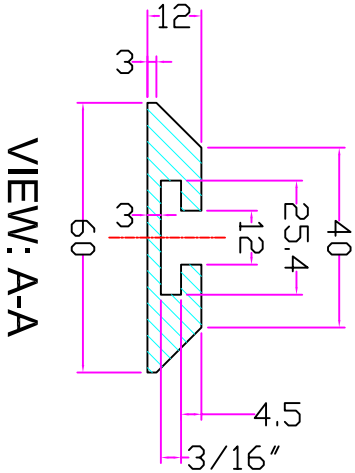
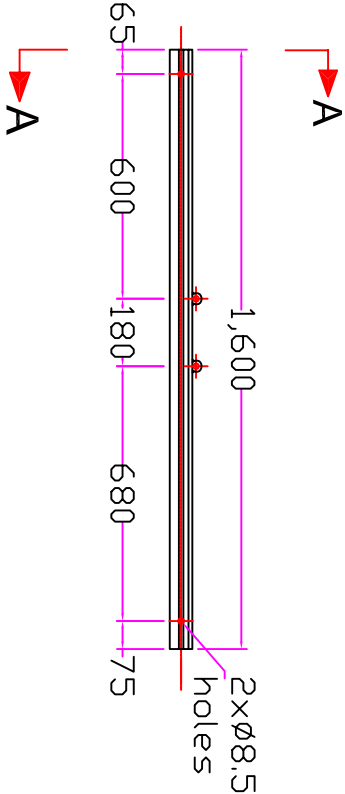
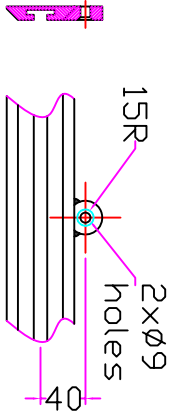
Date

Dwg No

2006.05.28

PA-42-03

BB42R



SCSYS

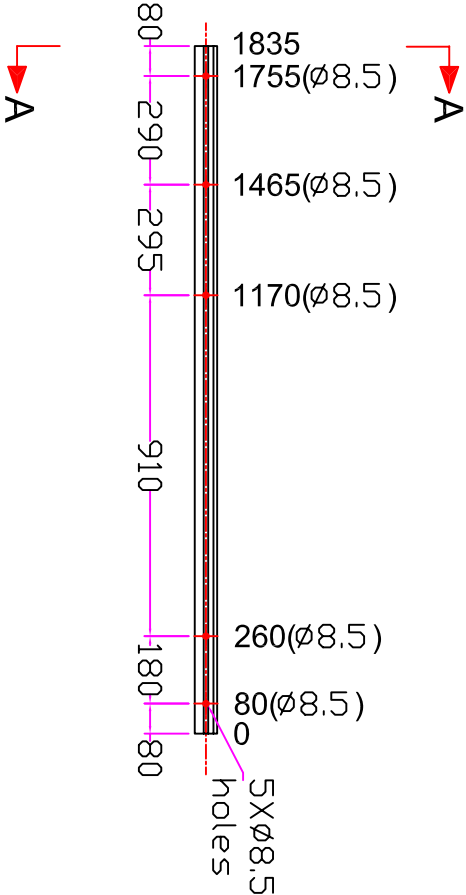
Scale

Rail side left rear

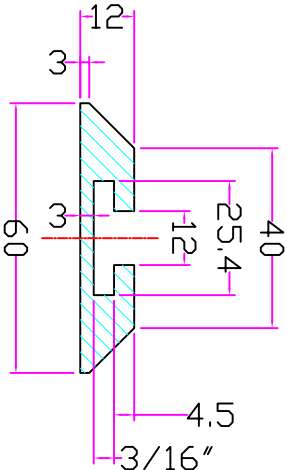
Date 2006.05.28

Dwg No PA-42-04

BB42R



VIEW: A-A



SCSYS

Scale

Rail side left front

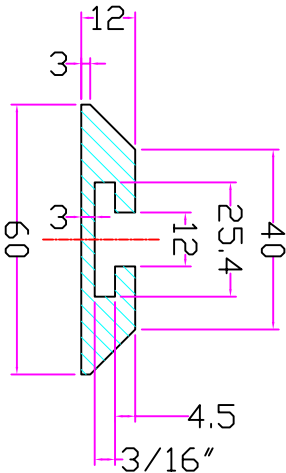
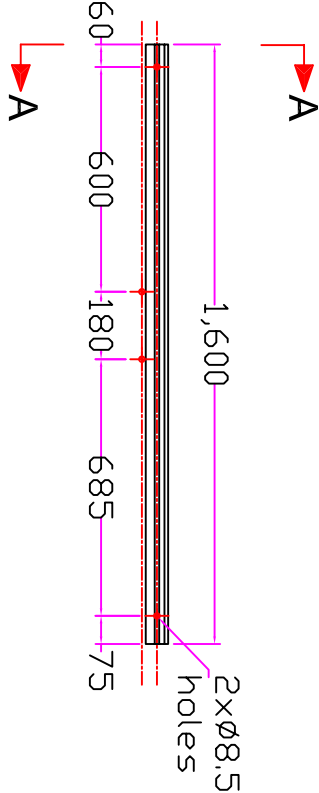
Date

Dwg No

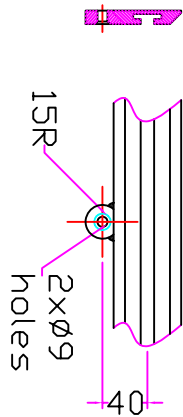
2006.05.28

PA-42-05

BB42R



VIEW: A-A



SCSYS

Scale

Rail side right rear

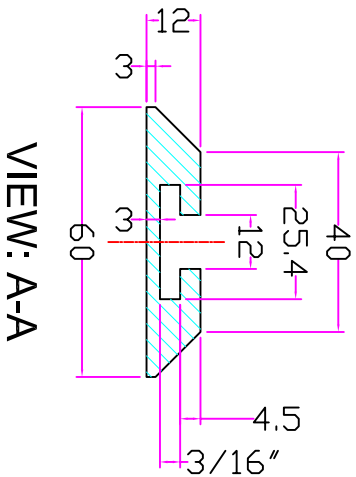
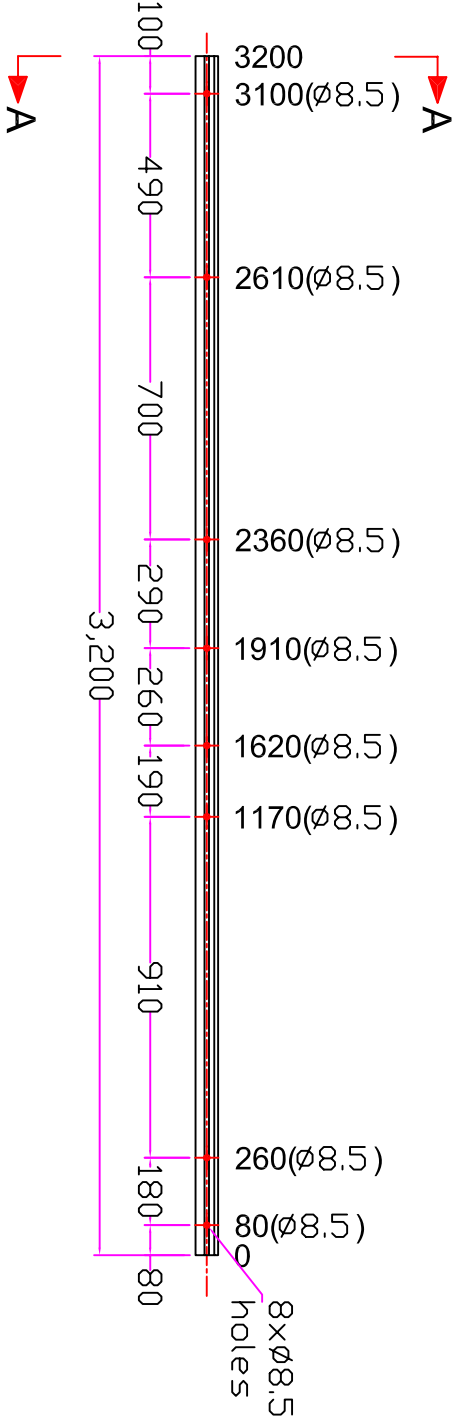
Date

Dwg No

2006.05.28

PA-42-06

BB42R



VIEW: A-A



SCSYS

Scale

Rail side right fronr

Date

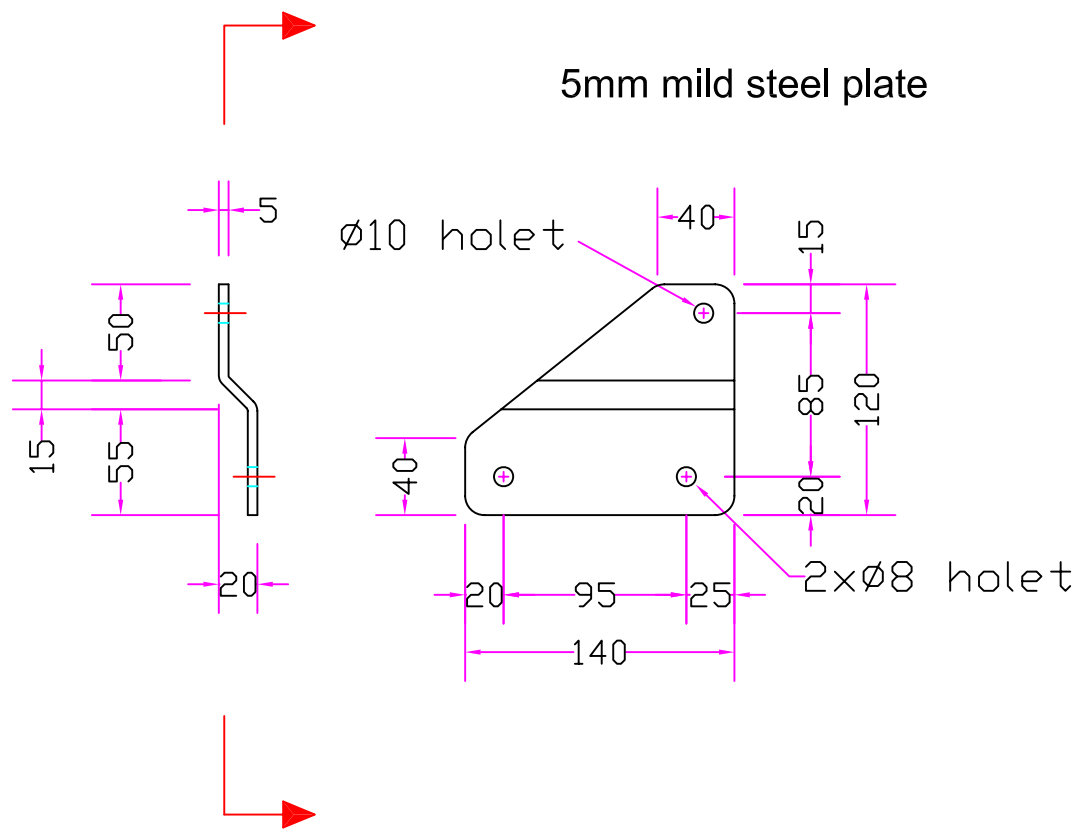
Dwg No

2006.05.28

PA-42-07

BB42R

Strong plate right front side rail

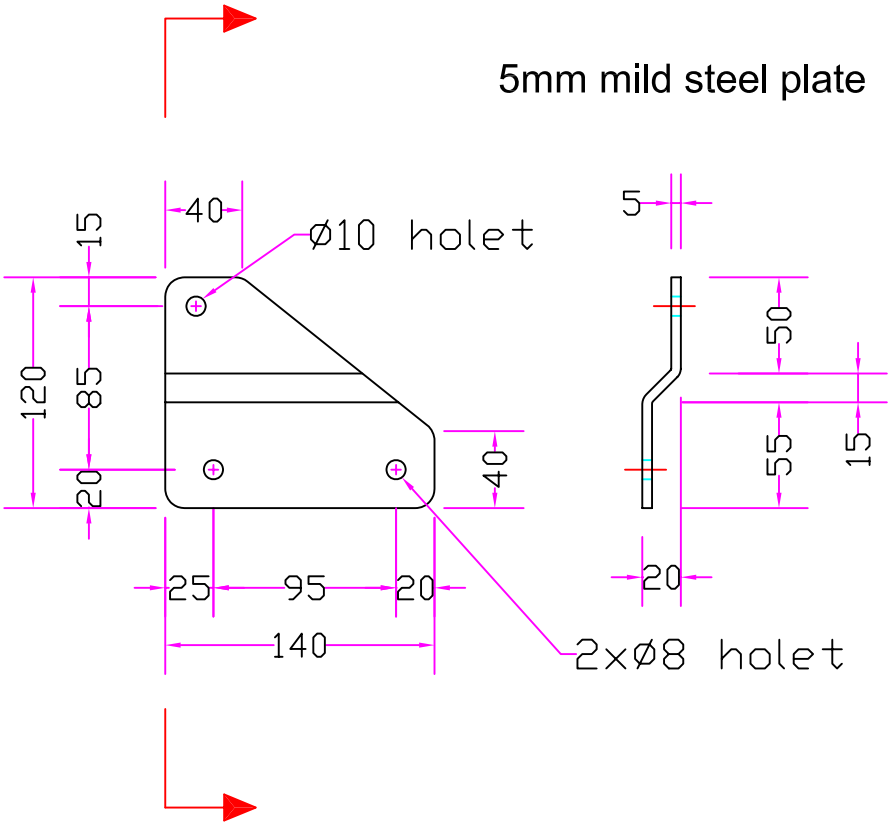


scsys

Date	2006.05.30
Dwg No	PA-42-11

BB42R

Strong Plate Left front side rail

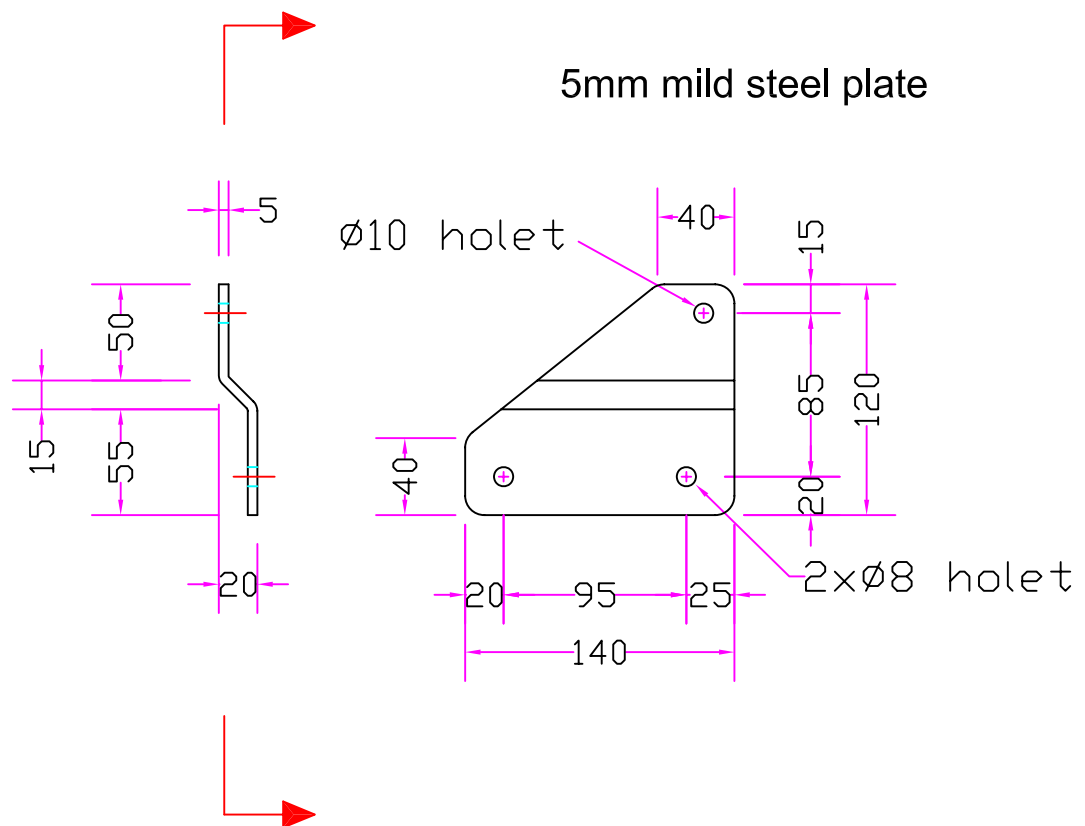


scsys

Date	2006.05.30
Dwg No	PA-42-12

BB42R

Strong plate right front side rail

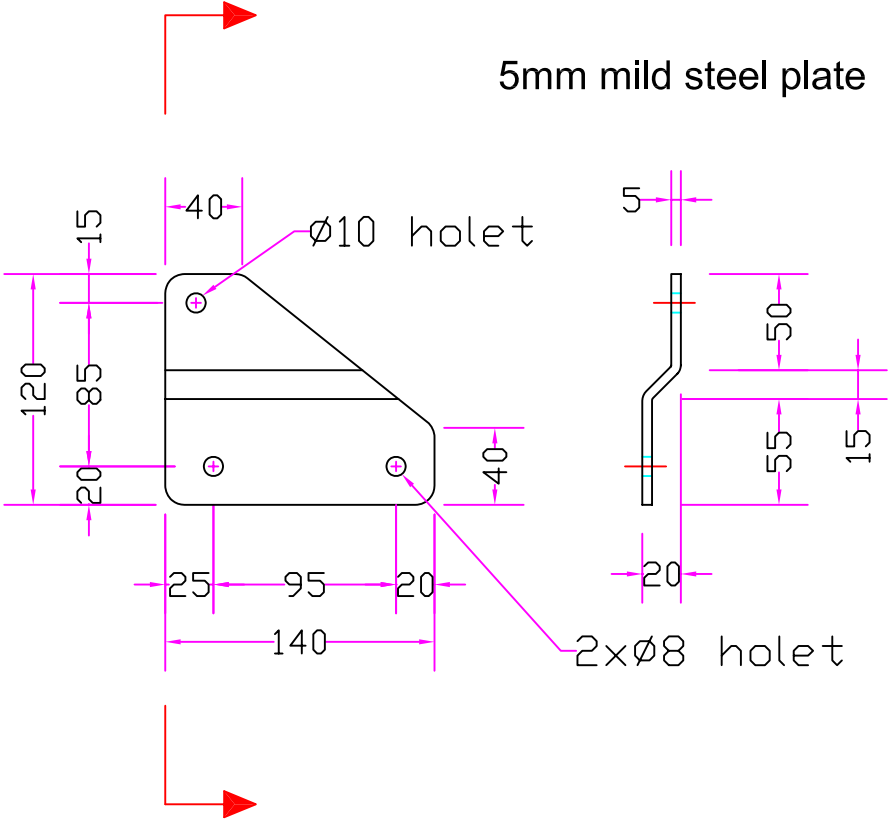


scsys

Date	2006.05.30
Dwg No	PA-42-13

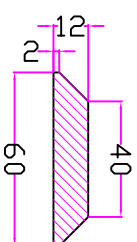
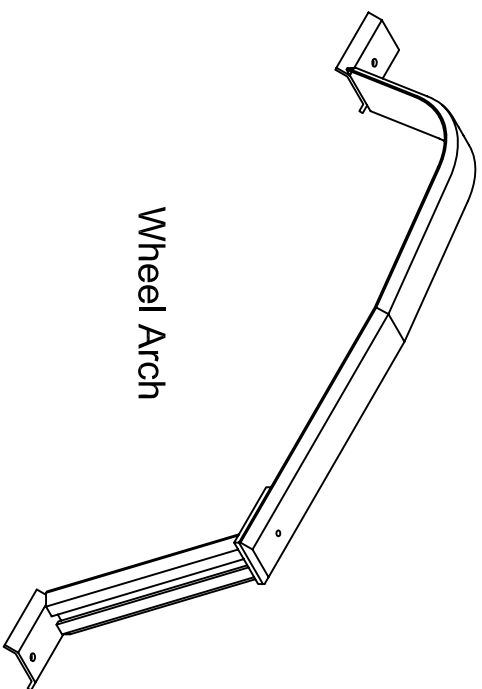
BB42R

Strong Plate Left front side rail



scsys

Date	2006.05.30
Dwg No	PA-42-14



Material: mild steel

Electrode: AWSSE6013

Wheel Arch

M8x20mm Bolt & Nut
Joining PB-01A
& PB-01B together

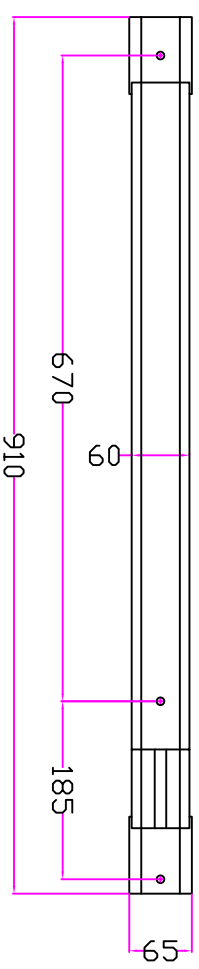
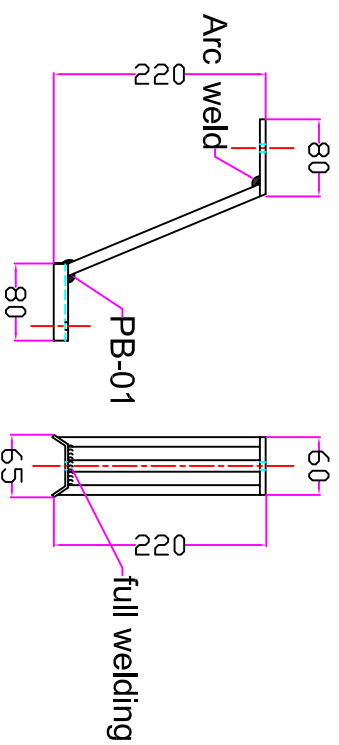
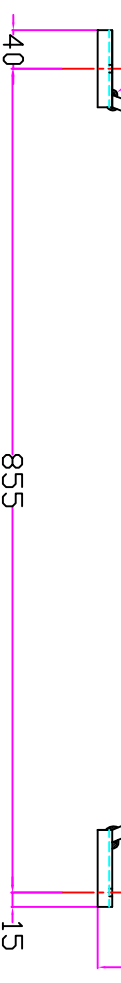
A A

Arc weld
full welding

Fitted to
wheel arch

PB-01B

PB-01A



SCSYS

Scale

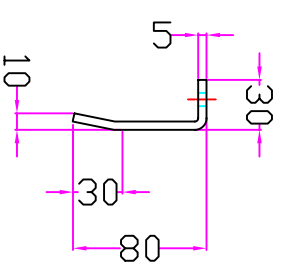
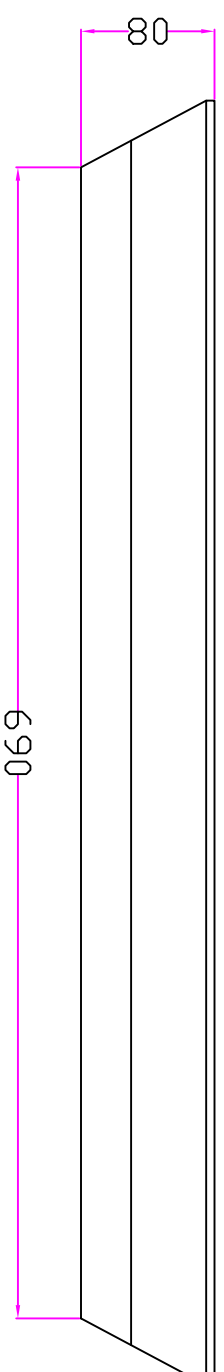
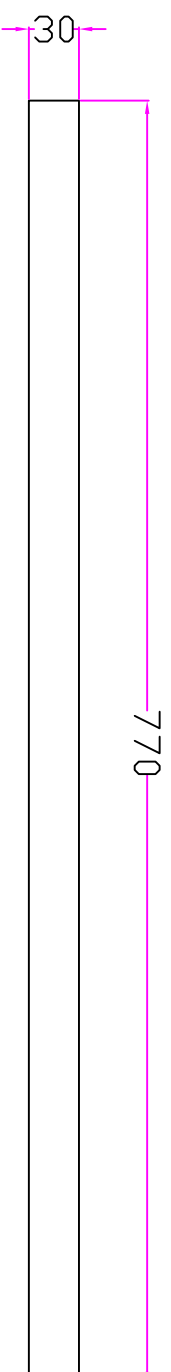
Wheel Arch left

Date 2006.05.18

Dwg No

PA-4X-01

Reinforcement Angle, under floor left 1



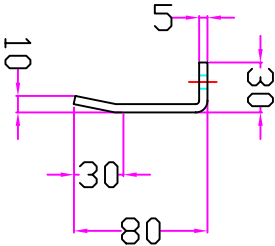
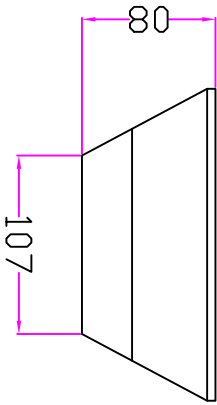
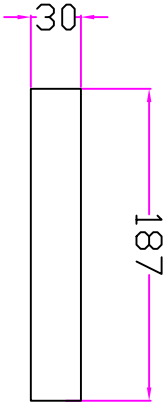
SCSYS

Scale

Date 2006.06.09

Dwg No PA-4X-11

Reinforcement Angle, under floor left 2



SCSYS

Scale

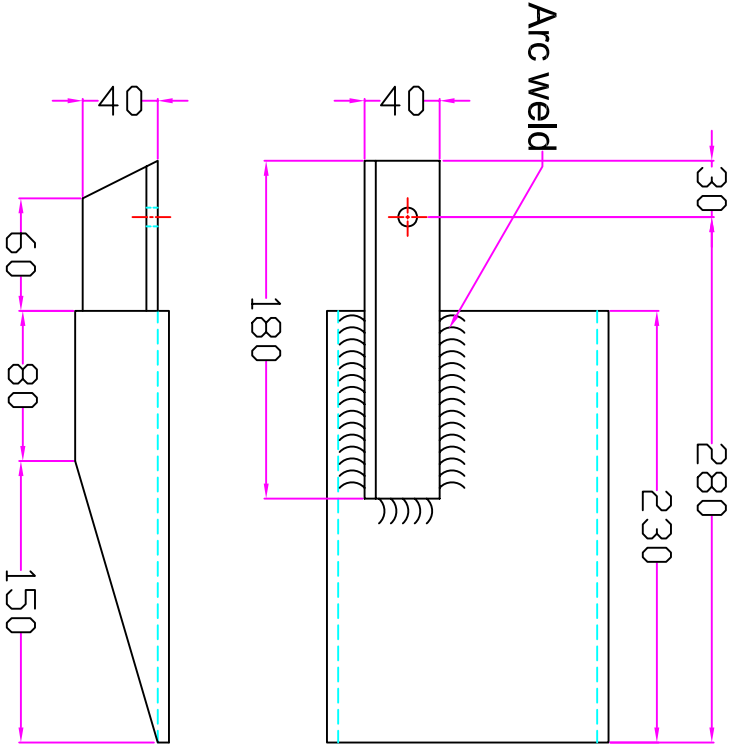
Date

Dwg No

2006.06.09

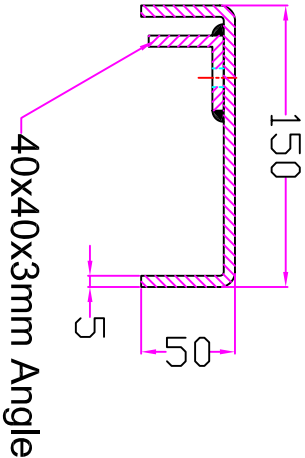
PA-4X-12

Reinforcement Bracket, under floor Right 1



Material: mild steel

Electrode: AWS E 6013



SCSYS

Scale

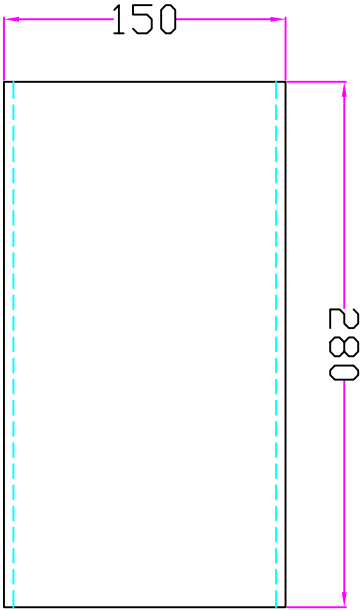
Date

Dwg No

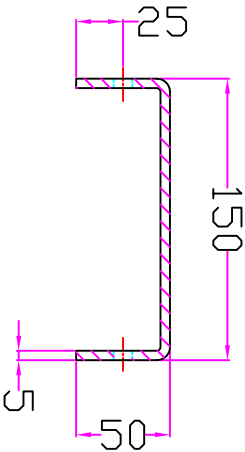
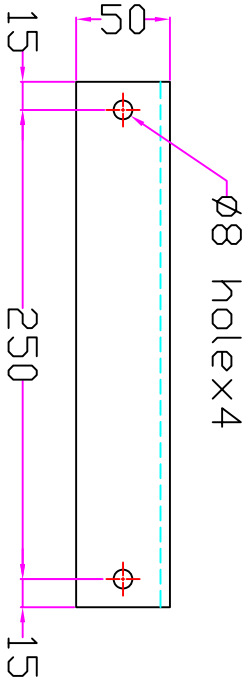
2006.06.09

PA-4X-13

Reinforcement Bracket, under floor Right 2



Material: mild steel



SCSYS

Scale

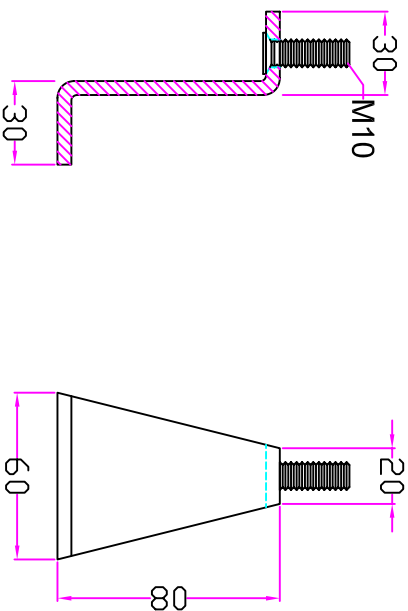
Date

Dwg No

2006.06.09

PA-4X-14

Reinforcement Bracket, under floor
next to full tank



SCSYS

Scale

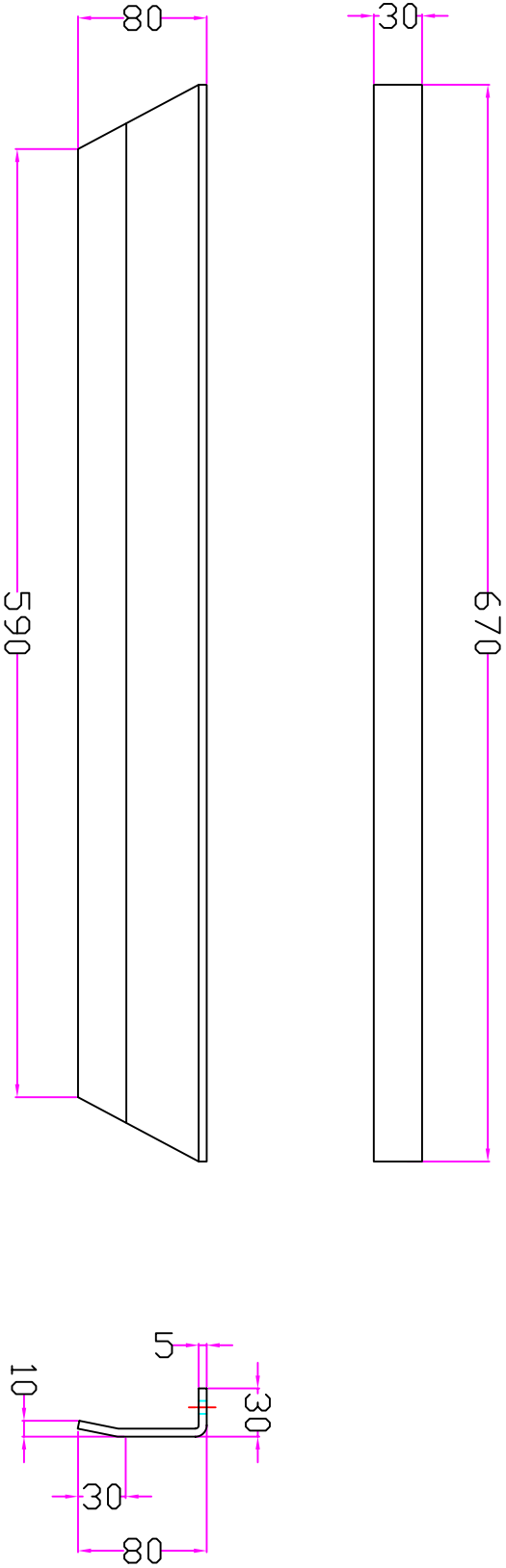
Date

Dwg No

2006.06.09

PA-4X-15

Reinforcement Angle, under floor right 3



SCSYS

Scale

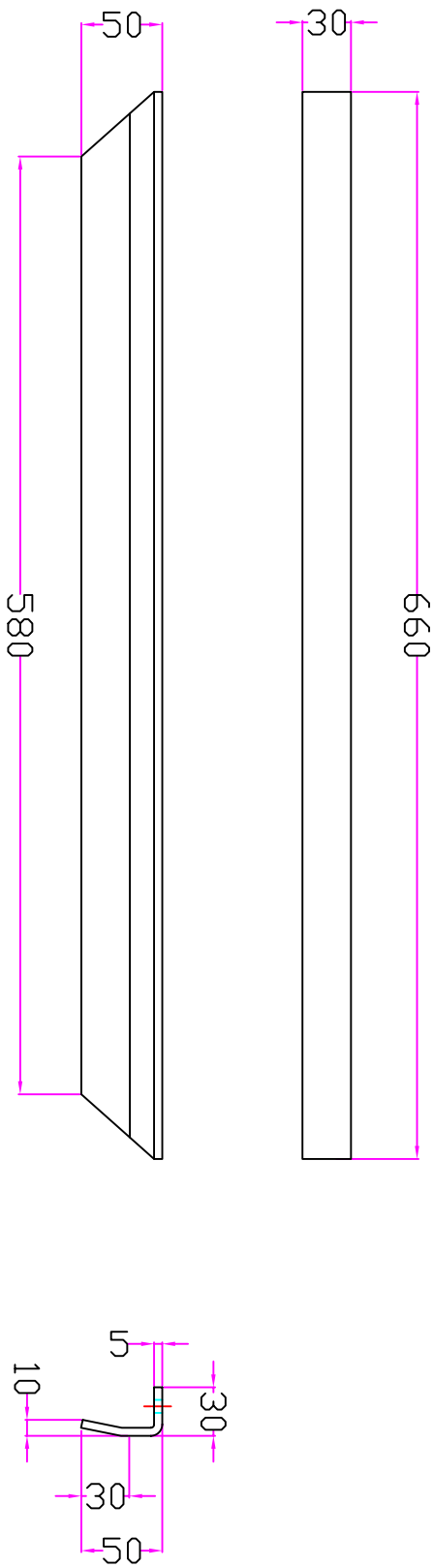
Date

Dwg No

2006.06.09

PA-4X-16

Reinforcement Angle, under floor right 4



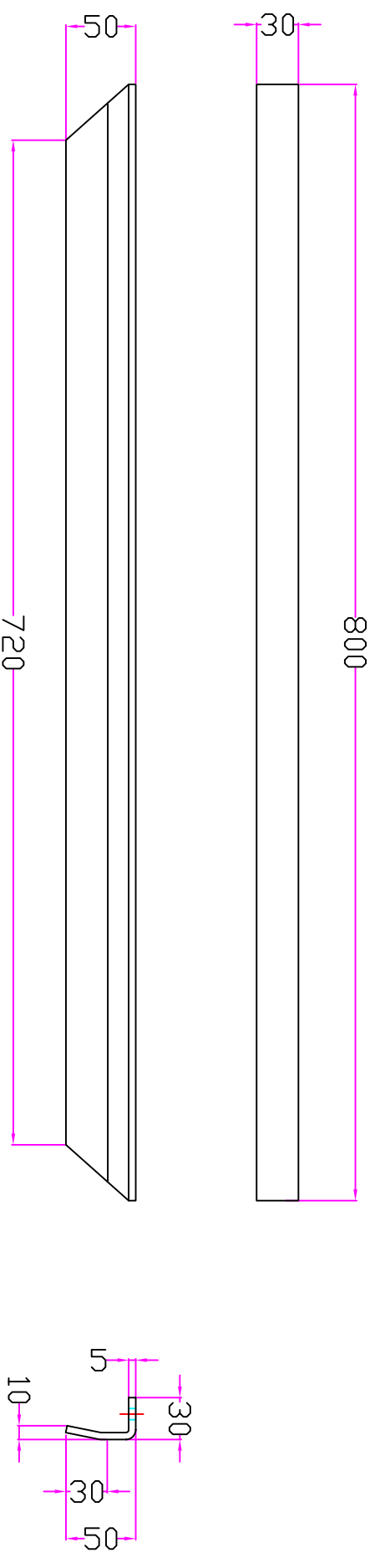
SCSYS

Scale

Date 2006.06.09

Dwg No PA-4X-17

Reinforcement Angle, under floor right 5



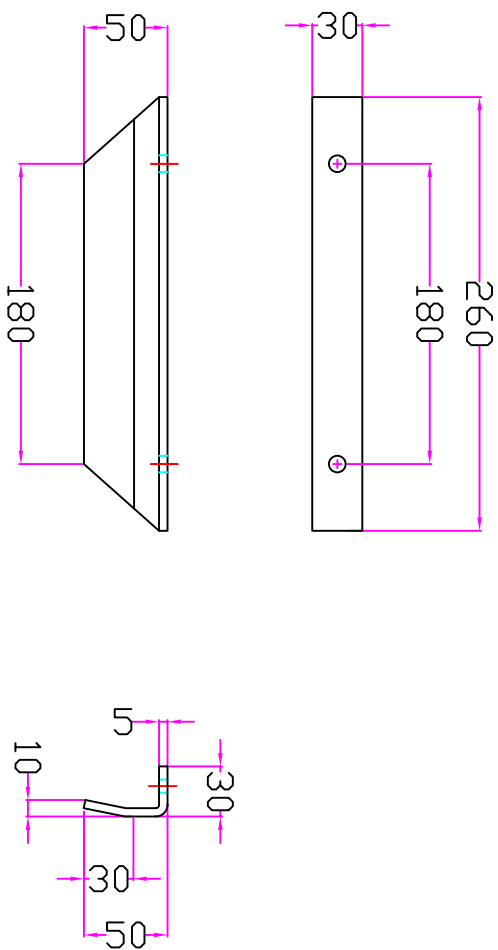
SCSYS

Scale

Date 2006.06.09

Dwg No PA-4X-18

Reinforcement Angle, under floor right 6



SCSYS

Scale

Date

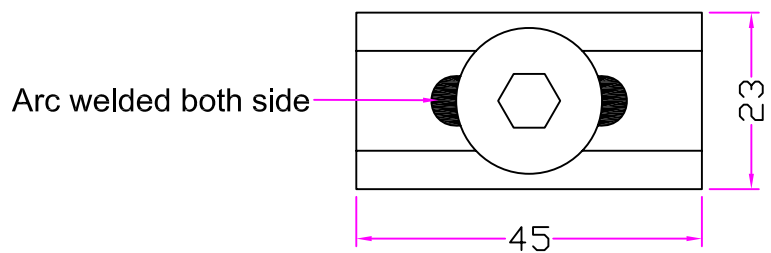
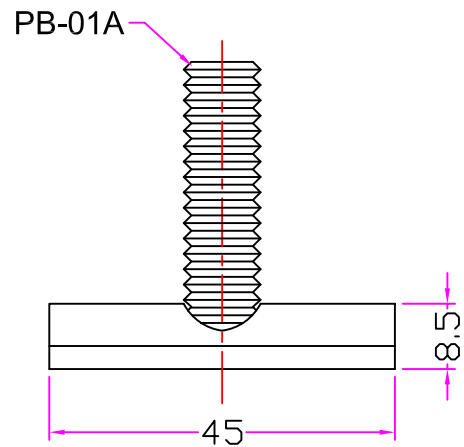
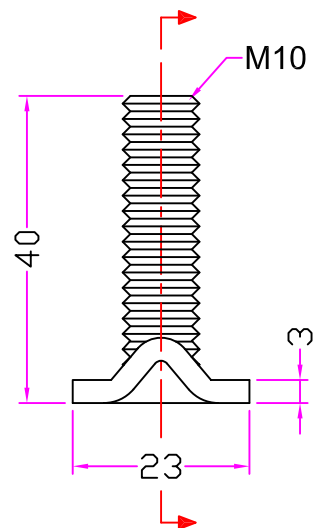
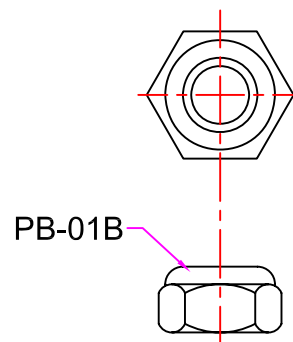
Dwg No

2006.06.09

PA-4X-19

Bolt & Nut Railing Seat Anchorage

Part No	Part Name & descriptions
PB-01A	Hexagonal socket Head with Rectangular steel guide size:M10 x 40mm standard:DIN 7991 Head marking:10.9 Low-Carbon martensite Q & T Maximum torque 65-70 kg-m
PB-01B	M10 Elastic insert lock Nut



scsys

Bolt & Nut Railing

Date

2006.05.30

Dwg No

PB-01